

1050 | INDUSTRIAL

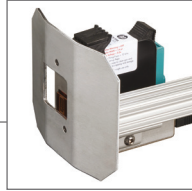
PRINTING MADE EASY

SIMPLE & RELIABLE ■ ■ ■

Fast and easy printing on primary and secondary packages

FLEXIBLE PRINthead OPTIONS

print codes from 12.7 mm
up to 50.8 mm high



HIGH SPEED PRINTING

of serialized barcodes for
product promotion and traceability

EASY TO USE

177.8 mm touch screen with intuitive
WYSIWYG interface for simple set-up

LOW MAINTENANCE

snap-in and out cartridges
for no-hassle reliable printing



SCANNABLE ■ ■ ■

High resolution codes printed at high speeds

HIGH QUALITY

text, logos and high-density graphics



100% READABLE

1D and 2D barcodes at high production rates

PRECISION PRINT CONTROL

variable dpi from 1 to 600 dots per
inch for optimized barcode printing

FLEXIBLE & INDUSTRIAL ■ ■ ■

Suitable for dusty, humid and corrosive environments

QUICK SETUP

portable design for
efficient line changes

SECURE OPERATION

three levels of
menu-driven accessibility

MAXIMIZE UPTIME

reduce TCO with 680 ml or 1360 ml
bulk ink delivery module - aqueous inks only



MINIMIZE INK CONSUMPTION

with draft mode feature and
variable print density

CENTRALLY MANAGE CODES
create images and network printers
with optional CoLOS® software



LINE SPEED/RESOLUTION

- ▶ Maximum line speed 201 m/min (660 ft/min)
- ▶ Maximum resolution 600 x 600 dpi

PRINT FEATURES

- ▶ Static text, user inserts, date/time stamps, shift codes, counters, bitmaps, conditional bitmaps, and variable data
- ▶ Windows True Type fonts
- ▶ Barcodes 1D: Codabar, Code 128, Code 39, Code 93, EAN8, EAN13, EAN128, Interleaved 2 of 5, Pharmacode, Plessey, UPC-A, UPC-E
- ▶ Barcodes 2D: Aztec, Data Matrix, Maxi Code, Micro QR Code, PDF417, QR Code, QR Code 2005
- ▶ Additional barcodes available upon request

PRINTHEADS & MOUNTING CONFIGURATIONS

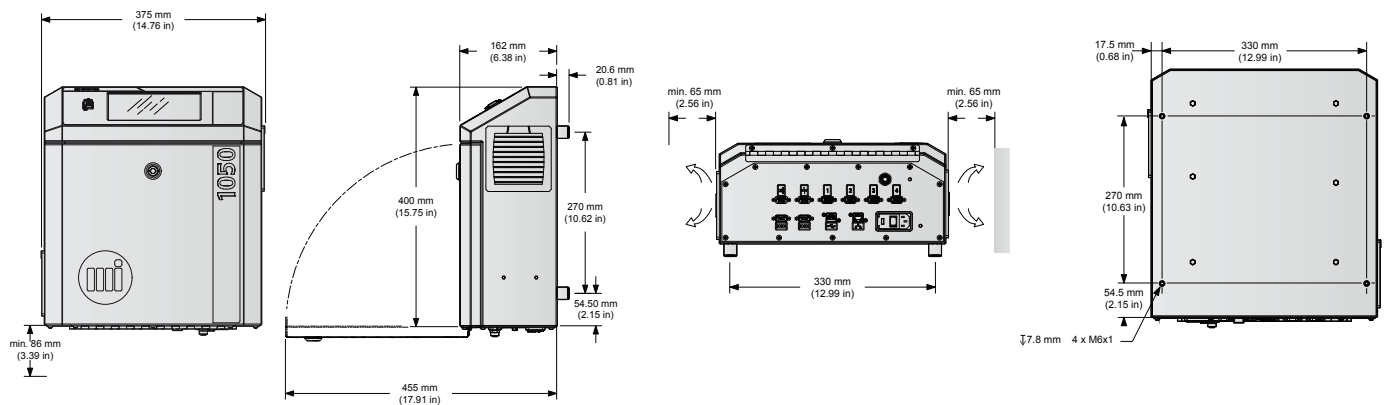
- ▶ There are several printhead and mounting options available. Please contact a Markem-Imaje Applications Engineer for further assistance in selecting the appropriate components.

CONTROLLER

- ▶ 177.8 mm (7") touch screen interface
- ▶ WYSIWYG template and print preview
- ▶ 3 levels of menu-driven security
- ▶ Workflow manager allows administrator to customize print process
- ▶ Industrial solid-state electronics with no moving parts
- ▶ 1 x Ethernet Ports, 2 x USB Ports, 2 x RS-232
- ▶ Industrial stainless steel enclosure
- ▶ Supports up to (4) 12.7 mm (1/2") heads, (2) 25.4 mm (1") heads or (1) 50.8 mm (2") head
- ▶ Encoder and sensor ports
- ▶ 110-240 VAC, 50/60 Hz, 1.3A
- ▶ Sensor Pin Out: P3-Hi (PnP), P6-GND, P7-Low (NPN), P8-12VDC
- ▶ Bulk ink option available
- ▶ Operating temperature:
 - Printer – 10 to 40 °C
 - Inks – Aqueous 10-40 °C (except 10068196-S at 5-40 °C), solvent 15-35 °C
 - Inks may work outside these ranges depending on the application and environment
- ▶ Humidity: 0-80% RH (non-condensing)

SOFTWARE

- ▶ CoLOS® Enterprise



We reserve the right to amend the design and/or specifications of our products without notice.

9, rue Gaspard Monge
 B.P. 110
 26501 Bourg-lès-Valence Cedex
 France
 Tel.: +33 (0) 4 75 75 55 00
 Fax: +33 (0) 4 75 82 98 10

150 Congress Street
 Keene, NH 03431
 United States of America
 Tel.: +1 800-258-5356
 Fax: +1 603-357-1835



markem·imaje
 a **DOVER** company

To learn more, visit www.markem-imaje.com

